



2015

COMMERCIAL VEHICLE WHEEL

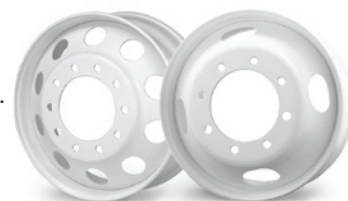
QUICK REFERENCE GUIDE

Application Guide for Commercial Vehicles



Hub-Piloted Steel Disc Wheels

- Hub-piloted wheels are designed for positive piloting with the hub at the center hole of the wheel.
- Wheels of this type have straight-through bolt holes (no ball seat or spherical countersink).
- Only one nut on each stud is used to fasten single or dual wheels to a vehicle.



Part Number	Size	Wheel Offset	Disc Thickness	Approximate Weight	Hand Holes	Maximum Load Rating	Maximum Inflation	Recommended Valve
-------------	------	--------------	----------------	--------------------	------------	---------------------	-------------------	-------------------

8 Bolt Hole • 165.10mm (6.500") Bolt Circle • 121.11mm (4.768") Center Hole

91816	17.5 x 6.75	-0.31"	0.374"	49 lbs.	0	4,805 lbs.	125 psi	TR-500
91818	17.5 x 6.75	0.19"	0.374"	49 lbs.	0	4,805 lbs.	125 psi	TR-500
10008	17.5 x 6.75	-0.50"	0.505"	65 lbs.	0	6,005 lbs.	125 psi	TR-500

8 Bolt Hole • 275.00mm (10.827") Bolt Circle • 221.11mm (8.705") Center Hole

10013 ⁽¹⁾	17.5 x 6.75	5.60"	0.438"	65 lbs.	4	6,500 lbs.	125 psi	TR-500/TR-574-G29
91831 ⁽¹⁾	19.5 x 6.75	5.60"	0.432"	58 lbs.	4	5,000 lbs.	115 psi	TR-575 /TR-570-E14
2890157	19.5 x 6.75	5.70"	0.433"	58 lbs.	8	5,500 lbs.	120 psi	V3-22-1 ⁽²⁾
90614	22.5 x 7.50	6.50"	0.425"	76 lbs.	4	6,610 lbs.	120 psi	TR-572
88884	22.5 x 8.25	6.62"	0.425"	69 lbs.	4	7,400 lbs.	120 psi	TR-573
89920	22.5 x 8.25	6.62"	0.495"	90 lbs.	4	8,000 lbs.	120 psi	TR-573
88790	24.5 x 8.25	6.62"	0.432"	78 lbs.	4	7,400 lbs.	120 psi	TR-573
89851	24.5 x 8.25	6.62"	0.495"	94 lbs.	4	8,000 lbs.	120 psi	TR-573

⁽¹⁾ For 10013 and 91831: Fits on ISO hub backup diameter for 8-hole 275mm systems.

⁽²⁾ For 2890157: This wheel requires a specific valve, per ETRTO standards. There is no T&RA equivalent standard.

10 Bolt Hole • 285.75mm (11.250") Bolt Circle • 220.09mm (8.665") Center Hole

91840	19.5 x 7.50	6.40"	0.432"	65 lbs.	5	6,700 lbs.	120 psi	TR-546-36
90631	22.5 x 7.50	6.50"	0.425"	78 lbs.	2	7,100 lbs.	120 psi	TR-573
10038	22.5 x 7.50	6.50"	0.425"	76 lbs.	5	7,100 lbs.	120 psi	TR-573
90541	22.5 x 8.25	6.62"	0.425"	70 lbs.	2	7,400 lbs.	120 psi	TR-573
90262	22.5 x 8.25	6.62"	0.425"	68 lbs.	5	7,400 lbs.	120 psi	TR-573
10073	22.5 x 8.25	6.62"	0.425"	68 lbs.	10	7,400 lbs.	120 psi	TR-573
90260	22.5 x 8.25	6.62"	0.495"	84 lbs.	2	8,000 lbs.	120 psi	TR-573
10049	22.5 x 8.25	6.62"	0.495"	82 lbs.	5	8,000 lbs.	120 psi	TR-573
10041	22.5 x 9.00	5.77"	0.517"	92 lbs.	5	10,000 lbs.	130 psi	TR-573-E17
10047	22.5 x 9.00	7.00"	0.588"	102 lbs.	5	10,000 lbs.	130 psi	TR-573-E17
90542	24.5 x 8.25	6.62"	0.432"	79 lbs.	2	7,400 lbs.	120 psi	TR-573
90263	24.5 x 8.25	6.62"	0.432"	77 lbs.	5	7,400 lbs.	120 psi	TR-573
10076	24.5 x 8.25	6.62"	0.432"	82 lbs.	10	7,400 lbs.	120 psi	TR-573
90261	24.5 x 8.25	6.62"	0.495"	97 lbs.	2	8,000 lbs.	120 psi	TR-573

10 Bolt Hole • 335.00mm (13.189") Bolt Circle • 281.10mm (11.067") Center Hole

2920086	22.5 x 7.50	6.49"	0.458"	78 lbs.	10	6,930 lbs.	120 psi	V3-20-4 ⁽³⁾
2920072	22.5 x 8.25	6.69"	0.497"	84 lbs.	10	7,810 lbs.	120 psi	V3-20-4 ⁽³⁾
10053 ⁽⁴⁾	22.5 x 9.00	6.88"	0.538"	91 lbs.	10	8,818 lbs.	130 psi	V3-20-6 ⁽³⁾

⁽³⁾ For 2920086, 2920072 and 10053: These wheels require a specific valve, per ETRTO standards. There is no T&RA equivalent standard.

⁽⁴⁾ For 10053: This wheel may also be used as stud-piloted application.



Stud-Piloted Steel Disc Wheels

- Stud-piloted wheels are designed for centering by the nuts on the bolts / studs.
- Dual wheels require inner and outer cap nuts. For a front or single wheel, single cap nuts are used.
- RH and LH fasteners are required. Wheels of this type have spherical countersinks at each stud hole.



Part Number	Size	Wheel Offset	Disc Thickness	Approximate Weight	Hand Holes	Maximum Load Rating	Maximum Inflation	Recommended Valve
10 Bolt Hole • 222.25mm (8.750") Bolt Circle • 165.35mm (6.510") Center Hole								
91834	17.5 x 6.75	6.19"	0.418"	62 lbs.	2	6,500 lbs.	125 psi	TR-574-E26
10 Bolt Hole • 285.75mm (11.250") Bolt Circle • 221.87mm (8.735") Center Hole								
87893	22.5 x 7.50	6.50"	0.425"	78 lbs.	2	7,100 lbs.	120 psi	TR-572
87892	22.5 x 7.50	6.50"	0.425"	76 lbs.	5	7,100 lbs.	120 psi	TR-572
87905	22.5 x 8.25	6.62"	0.425"	70 lbs.	2	7,400 lbs.	120 psi	TR-573
87904	22.5 x 8.25	6.62"	0.425"	68 lbs.	5	7,400 lbs.	120 psi	TR-573
89921	22.5 x 8.25	6.62"	0.495"	90 lbs.	2	8,000 lbs.	120 psi	TR-573
10048	22.5 x 9.00	7.00"	0.588"	104 lbs.	2	10,000 lbs.	130 psi	TR-573-E17
87897	24.5 x 8.25	6.62"	0.432"	79 lbs.	2	7,400 lbs.	120 psi	TR-573
87896	24.5 x 8.25	6.62"	0.432"	77 lbs.	5	7,400 lbs.	120 psi	TR-573
89922	24.5 x 8.25	6.62"	0.495"	97 lbs.	2	8,000 lbs.	120 psi	TR-573



Triple Protection, Standard Pricing!

Maxion Wheels Steel Wheels and Demountable Rims feature a triple-protection coating that offers enhanced durability and great looks. Our proprietary MaxCoat™ process creates a high-quality, baked-on finish that delivers maximum corrosion protection—one that can withstand 2,000 hours of salt spray testing per ASTM B117 standards.

The Maxion Wheels process consists of a zinc-phosphate undercoating, followed by an electro-deposition primer (EDP), and then a premium topcoat finish that is cured in a specially designed oven. It provides superior protection against road wear, enhanced UV/fade resistance and reduces maintenance costs. Maxion Wheels offers MaxCoat™ in white and gray as standard options. Custom colors are also available for an additional fee.

White Topcoat

Gray Topcoat

Black Topcoat

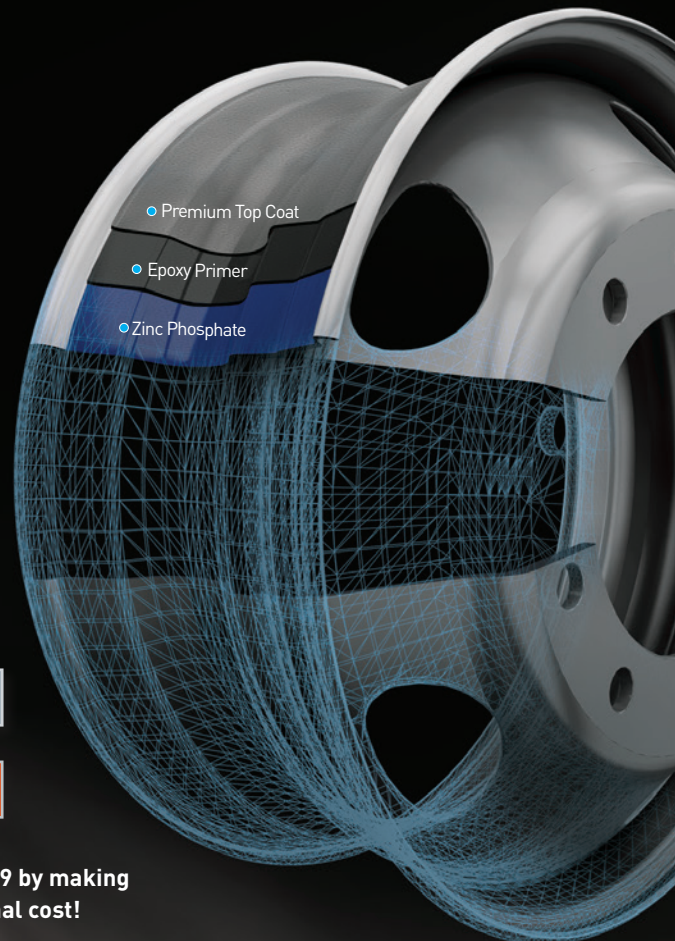
Silver Topcoat

Red Topcoat

Yellow Topcoat

Green Topcoat

Orange Topcoat



Maxion Wheels has been setting industry standards in durable finishes since 2009 by making our field-proven MaxCoat™ finish available on our standard options at no additional cost!



Hub-Piloted Steel Disc Wheels | Bus Mountings

- Robust construction to meet heavy-duty bus applications and usage.
- Hub-piloted configuration with increased bolt hole diameter to accommodate larger hub studs.
- Hub-piloted center hole provides a truer mounting than stud-piloted wheels.



Part Number	Size	Wheel Offset	Disc Thickness	Approximate Weight	Hand Holes	Maximum Load Rating	Maximum Inflation	Recommended Valve
10 Bolt Hole • 285.75mm (11.250") Bolt Circle • 220.19mm (8.669") Center Hole								
87934	22.5 x 8.25	6.62"	0.425"	79 lbs.	5	7,400 lbs.	120 psi	TR-573
91720	24.5 x 8.25	6.62"	0.432"	88 lbs.	5	7,400 lbs.	120 psi	TR-573



Wide-Base Steel Disc Wheels | Hub- & Stud-Piloted

- All Wide-Base steel disc wheels are topcoat painted white. Customer colors are available upon request.
- These wheels offer weight savings for better fuel economy, higher load applications, and less tire wear.



Part Number	Size	Outset (pos.)	Inset (neg.)	Approximate Weight	Hand Holes	Maximum Load Rating	Maximum Inflation	Recommended Valve ⁽⁵⁾
HUB-PILOTED: 10 Bolt Hole • 285.75mm (11.250") Bolt Circle • 220.09mm (8.665") Center Hole								
10034	22.5 x 12.25	4.54"	4.00"	111 lbs.	5	11,400 lbs.	125 psi	TR-500
10035	22.5 x 12.25	5.29"	4.75"	111 lbs.	5	11,400 lbs.	125 psi	TR-574-E26
10039	22.5 x 13.00	0.50"	0"	119 lbs.	5	11,000 lbs.	110 psi	TR-574-E26
10043	22.5 x 13.00	3.12"	2.62"	119 lbs.	5	11,000 lbs.	110 psi	TR-500
10059	22.5 x 13.00	4.84"	4.32"	121 lbs.	5	11,700 lbs.	130 psi	TR-574-E26
10056	22.5 x 13.00	5.80"	5.25"	117 lbs.	5	11,400 lbs.	125 psi	TR-574-E26
10084 ⁽⁶⁾	22.5 x 14.00	2.00"	⁽⁷⁾ ---	113 lbs.	20	11,000 lbs.	125 psi	TR-500
10085	22.5 x 14.00	2.00"	⁽⁷⁾ ---	113 lbs.	20	11,000 lbs.	125 psi	TR-500
10086	22.5 x 14.00	⁽⁷⁾ ---	0"	113 lbs.	20	12,300 lbs.	120 psi	TR-500
STUD-PILOTED: 10 Bolt Hole • 285.75mm (11.250") Bolt Circle • 221.87mm (8.735") Center Hole								
10032	22.5 x 12.25	4.54"	4.00"	112 lbs.	2	11,400 lbs.	125 psi	TR-500
10033	22.5 x 12.25	5.29"	4.75"	112 lbs.	2	11,400 lbs.	125 psi	TR-574-E26
10042	22.5 x 13.00	0.50"	0"	120 lbs.	2	11,000 lbs.	110 psi	TR-574-E26
10036	22.5 x 13.00	3.12"	2.62"	120 lbs.	2	11,000 lbs.	110 psi	TR-500
10060	22.5 x 13.00	4.83"	4.32"	121 lbs.	5	11,000 lbs.	130 psi	TR-574-E26
10070	22.5 x 14.00	2.00"	⁽⁷⁾ ---	125 lbs.	0	11,000 lbs.	125 psi	TR-575/TR-570-E14
STUD-PILOTED: 10 Bolt Hole • 335.00mm (13.189") Bolt Circle • 281.10mm (11.067") Center Hole								
2920524	22.5 x 11.75	1.87"	1.34"	96 lbs.	20	9,920 lbs.	130 psi	V3-22-1 ⁽⁸⁾
HEAVY DUTY STUD-PILOTED: 10 Bolt Hole • 335.00mm (13.189") Bolt Circle • 270.51mm (10.650") Center Hole								
10044	22.5 x 13.00	⁽⁷⁾ ---	6.12"	122 lbs.	0	10,210 lbs.	110 psi	TR-570
10045	22.5 x 13.00	⁽⁷⁾ ---	6.12"	123 lbs.	0	12,500 lbs.	125 psi	TR-570

⁽⁵⁾ The recommended valves listed for the 12.25" and 13.00" rim sizes are for the INSET position.

⁽⁶⁾ For 10084: Cautionary stamp provided for N-spindle applications.

⁽⁷⁾ Wheel not intended to be used in this position.

⁽⁸⁾ For 2920524: This wheel requires a specific valve, per ETRTO standards. There is no T&RA equivalent standard.

For complete information, questions, or special applications, please call (800) 337-0457.

Steel Demountable Rims

- Tubeless or Tube-Type demountable rims are used for Cast Spoke wheels.
- For superior corrosion protection, demountable rims are painted with our standard Electro-Deposition Primer and *Premium Topcoat* in either white or gray, with customer colors available upon request.



On-Highway Tubeless Rims

Part Number	Size	Rim Offset	Approximate Weight	Maximum Load Rating	Maximum Inflation	Recommended Valve
675175ERS	17.5 x 6.75	3.90"	47 lbs.	4,805 lbs.	120 psi	TR-572
750225DVS	22.5 x 7.50	4.26"	64 lbs.	7,030 lbs.	120 psi	TR-572
825225DVL	22.5 x 8.25	4.75"	68 lbs.	7,400 lbs.	120 psi	TR-573
825245DVL	24.5 x 8.25	4.75"	70 lbs.	7,400 lbs.	120 psi	TR-573

17.5" diameter rims fit with 15" cast spoke wheels and 15" diameter spacer bands in dual applications.
 22.5" diameter rims fit with 20" cast spoke wheels and 20" diameter spacer bands in dual applications.
 24.5" diameter rims fit with 22" cast spoke wheels and 22" diameter spacer bands in dual applications.

Tube-Type Rims⁽⁹⁾

Assembly Part Number	Size / Type	Rim Offset	Approximate Weight	Maximum Load Rating	Maximum Inflation	Rim Base	Side Ring
6515LWDE	6.50 - 15 LW	3.715"	37 lbs.	4,290 lbs.	105 psi	B6515LWDE	R6515LWE
6520LWDE	6.50 - 20 LW	3.715"	49 lbs.	4,610 lbs.	105 psi	B6520LWDE	R6520LWE
7515LWDE	7.50 - 15 LW	4.258"	52 lbs.	5,520 lbs.	105 psi	B7515LWDE	R8015LWE
7520LWDE	7.50 - 20 LW	4.258"	70 lbs.	6,400 lbs.	105 psi	B7520LWDE	R8020LWE
8020LWDE	8.00 - 20 LW	4.496"	73 lbs.	7,600 lbs.	105 psi	B8020LWDE	R8020LWE
8024LWDE	8.00 - 24 LW	4.496"	87 lbs.	7,600 lbs.	105 psi	B8024LWDE	R8024LWE
9020LWDE	9.00 - 20 LW	5.123"	92 lbs.	9,230 lbs.	120 psi	B9020LWDE	R8020LWE
9024LWDE	9.00 - 24 LW	5.123"	110 lbs.	9,230 lbs.	120 psi	B9024LWDE	R8024LWE

⁽⁹⁾ LW type rims are designed for On-Highway applications.

Heavy Duty Tube-Type M Rims

Assembly Part Number	Size	Rim Offset	Approximate Weight	Maximum Load Rating	Maximum Inflation	Rim Base	Flange	Lock Ring
7520MDE	7.50VM - 20	4.750"	80 lbs.	7,600 lbs.	120 psi	B8020LWDE	F7520ME	LR20ME
7524MDE	7.50VM - 24	4.750"	97 lbs.	7,600 lbs.	120 psi	B8024LWDE	F7524ME	LR24ME
8520MDE	8.50VM - 20	5.375"	99 lbs.	9,230 lbs.	120 psi	B9020LWDE	F7520ME	LR20ME
8524MDE	8.50VM - 24	5.375"	119 lbs.	9,230 lbs.	120 psi	B9024LWDE	F7524ME	LR24ME
1020MDE	10.00W - 20	6.312"	116 lbs.	9,610 lbs. 11,250 lbs. ⁽¹⁰⁾	120 psi 120 psi	B1020MDE	F1020ME	LR20ME
1024MDE	10.00W - 24	6.312"	141 lbs.	9,740 lbs. 11,500 lbs. ⁽¹⁰⁾	120 psi 120 psi	B1024MDE	F1024ME	LR24ME

⁽¹⁰⁾ For 1020MDE and 1024MDE: Load rating is restricted to highway speeds of 50 miles per hour maximum.

Low Point Markings

Marking "Dimple":

- Stamped onto the visual side of the rim bead seat for ease of identification to assure the wheel was checked for runout

Match Mounting:

- Minimizes vehicle vibration and wear
- Results in improved ride
- Results in less damage to equipment / vehicle components



The World's Largest Wheel Manufacturer

Maxion Wheels boasts the combined engineering knowledge and innovative talents of three of the industry's greatest names—Hayes Lemmerz, Fumagalli and Maxion Wheels and Chassis.

Building on the traditions of our legacy companies, Maxion Wheels continues to lead in the development of materials and processes that move our industry forward. We are the world's largest wheel manufacturer, and the number one supplier of commercial vehicle steel wheels. Our North American manufacturing plants in Akron, Ohio, and San Luis Potosi, Mexico, have a rich history of more than a century of product innovation and excellence, and provide the broadest portfolio of lightweight steel wheels available in the world.

Maxion Wheels was the first to market with stud-piloted wheels, hub-piloted wheels and the first to include low point markings for match mounting. Today, we continue to raise the standard — offering premium MaxCoat™ triple protection as a standard finish on our commercial vehicle steel wheel products.

Maxion Wheels blends its North American manufacturing presence with a global supply and logistics network. As the world's largest wheel manufacturer we offer the stability and resources needed to help our customers succeed.



GLOBAL PRESENCE

WORLD HEADQUARTERS

Maxion Wheels

39500 Orchard Hill Place, Suite 500
Novi, Michigan 48375 USA
(800) 521-0515

UNITED STATES

Maxion Wheels

428 Seiberling Street
Akron, Ohio 44306 USA

MEXICO

Maxion Wheels

Eje 130 No. 175 Zona Industrial del Potosi
San Luis Potosi, S.L.P. 78395 Mexico

BRAZIL

Borlem S.A. Empreendimentos Industriais

Rua Barão do Rio Branco, 217, Itapegica
Guarulhos - SP - Brazil
07042-010

Maxion Rodas E Chassis

Rua Dr. Othon Barcellos, 83
Centro - Cruzeiro - SP - Brasil
12730-900

GERMANY

Maxion Wheels

Ladestrasse D-53639
Königswinter, Germany

INDIA

Maxion Wheels

Gat No. 635, Village Kuruli Village
Chakan, Tal: Khed, Dist: Pune 410 501, India

TURKEY

Maxion Wheels

Organize Sanayi Bolgesi 4.Yol No: 1
45030 Manisa, Turkey

CHINA

Maxion (Nantong) Wheels Co., Ltd.

No. 89, South Tongshen Road, Nantong ETD Zone
Jiangsu Province, China 226009