



# Steel Wheels



# Your COMPLETE source for Steel Wheels & Rims



## **CentruMount® & CentruSteel®**

### *Hub & Stud Piloted Steel Disc Wheels*

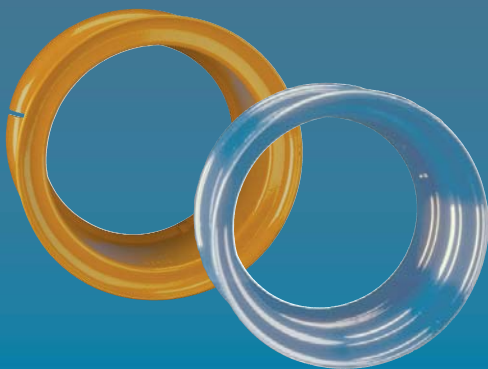
As an industry leader in disc wheel technology, we offer a full line of 8 and 10 bolt hole steel wheels for hub and stud piloted applications, with sizes including 17.5", 19.5", 22.5", and 24.5".

Developed with many years of proven technology and experience, our steel wheels are built to last. Available in standard Electro-Deposition Primer finish or for superior corrosion protection, choose our optional premium electrostatic powder topcoat in white, gray, black, or custom colors.



## **WIDE BASE Steel Wheels**

Our quality 22.5" wide base wheels are available in 12.25", 13", and 14" widths, and offer weight savings resulting in better fuel economy or more payload. For dual replacement applications, less tire rolling resistance may improve tire life. And with higher load ratings, you can be sure these wheels will carry the load! All wide base wheels are topcoated white, with custom colors available upon request.



## **Demountable Rims**

Our demountable rims are available in tubeless or tube-type designs. Tubeless rims are available in 17.5", 22.5" and 24.5" applications. On-highway tube-type rims are available in 15", 20" and 24" diameters, while heavy duty on/off highway type M rims are available in 20" and 24" diameter sizes. Choose our standard Electro-Deposition Primer finish or get superior corrosion protection with our premium electrostatic powder topcoat available in white, gray, black, or custom colors.

Developed with many years of proven technology and experience, our steel wheels are built to last. Every wheel must meet or exceed our rigorous quality standards (QS9000 & ISO14001 registered).

The quality of our wheels is backed by our standard

**5 YEAR Written Warranty!**

*\*See Warranty Certificate for details*



800•521•0515  
<http://ch.hayes-lemmerz.com>

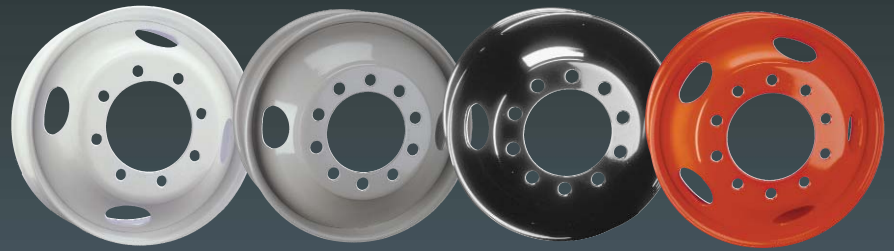
Form #4-1050B

# PAINT OPTIONS

Our quality steel wheels and rims are offered with a standard Electro-Deposition Primer finish or with an optional premium electrostatic powder topcoat for superior corrosion protection!

**EXTEND** the **LIFE**  
of your fleet's wheels  
with Hayes Lemmerz'

Premium Powder Topcoated  
wheels and rims.



Powder Topcoat colors include "great white", gray, black, and custom colors to match your requirements.

## TRIPLE PROTECTED, DOUBLE BAKED

Our wheels are cleaned and phosphate coated, then receive a coat of white electro-deposition primer (EDP exceeds 336 hours of corrosion protection). After baking, you can select the optional powder topcoat in the color of your choice, and then they're baked again. The process achieves a deep, attractive mirror-like finish with spectacular sheen & corrosion protection.

## IT SAVES YOU MONEY

Our premium powder topcoat finish resists rust for 2,000 hours under ASTM salt spray testing. In average service conditions, that represents years of exposure to road salt and other corrosives, which gives you more time between expensive repaintings. You'll reduce labor and materials for cleaning and wire brushing wheels during routine tire changing. Wheel maintenance no longer needs to be a significant expense!



## MATCH MOUNT MARKING

- Minimizes vehicle vibration and wear!
- Dimple marking assures every wheel has been checked for runout
- Match mounting maximizes the uniformity characteristics of the tire and wheel, creating better tire life and improved ride.







# CentruMount™ Hub Piloted Steel Disc Wheels



Money saving technology for maintenance savings and superior performance. Positive hub piloting and cone lock nut clamping provide better initial clamp force and superior torque retention. There are no inner wheel nuts to freeze on or to complicate retorquing.

Part Number	Size	Wheel Offset	Disc Thickness	Approximate Weight	Hand Holes	Maximum Load Rating	Maximum Inflation	Recommended Valve
<b>8 bolt hole, 6.50" bolt circle, 4.77" center hole</b>								
10008EBK	17.5" x 6.75"	-0.50"	0.500"	65 lbs.	0	6,005 lbs.	125 psi	TR-500
91816EBK	17.5" x 6.75"	-0.31"	0.385"	49 lbs.	0	4,805 lbs.	125 psi	TR-500
91818EBK	17.5" x 6.75"	0.19"	0.385"	49 lbs.	0	4,805 lbs.	125 psi	TR-500
<b>8 bolt hole, 6.50" bolt circle, 4.89" center hole</b>								
91817EBK	17.5" x 6.75"	-0.31"	0.385"	49 lbs.	0	4,805 lbs.	125 psi	TR-500
<b>8 bolt hole, 275mm bolt circle, 221.1mm (8.701") center hole</b>								
10013TW *	17.5" x 6.75"	5.60"	0.437"	65 lbs.	4	6,500 lbs.	125 psi	TR-574-L29
91831TW *	19.5" x 6.75"	5.60"	0.437"	58 lbs.	4	5,000 lbs.	115 psi	TR-570-E14
90614E	22.5" x 7.50"	6.50"	0.430"	76 lbs.	4	6,610 lbs.	120 psi	TR-572
88884E	22.5" x 8.25"	6.62"	0.430"	80 lbs.	4	7,400 lbs.	120 psi	TR-573
89920E	22.5" x 8.25"	6.62"	0.500"	90 lbs.	4	7,800 lbs.	120 psi	TR-573
88790E	24.5" x 8.25"	6.62"	0.437"	89 lbs.	4	7,400 lbs.	120 psi	TR-573
89851E	24.5" x 8.25"	6.62"	0.500"	94 lbs.	4	7,800 lbs.	120 psi	TR-573
* Fits on ISO hub backup diameter for 8 hole, 275mm systems. Do not use with CentruMount-8 brake drums.								
<b>10 bolt hole, 285.75mm (11.25") bolt circle, 220mm (8.661") center hole</b>								
91840TW	19.5" x 7.50"	6.40"	0.437"	65 lbs.	5	6,700 lbs.	120 psi	TR-546
10038E	22.5" x 7.50"	6.50"	0.430"	76 lbs.	5	7,100 lbs.	120 psi	TR-573
90631E	22.5" x 7.50"	6.50"	0.430"	78 lbs.	2	7,100 lbs.	120 psi	TR-573
90541E	22.5" x 8.25"	6.62"	0.430"	81 lbs.	2	7,400 lbs.	120 psi	TR-573
90273E	22.5" x 8.25"	6.62"	0.430"	82 lbs.	4	7,400 lbs.	120 psi	TR-573
90262E	22.5" x 8.25"	6.62"	0.430"	79 lbs.	5	7,400 lbs.	120 psi	TR-573
90260E	22.5" x 8.25"	6.62"	0.500"	90 lbs.	2	7,800 lbs.	120 psi	TR-573
10041E	22.5" x 9.00"	**5.25"	0.522"	94 lbs.	5	10,000 lbs.	130 psi	TR-573-E17
10047TW	22.5" x 9.00"	7.00"	0.581"	101 lbs.	5	10,000 lbs.	130 psi	TR-573-E17
90542E	24.5" x 8.25"	6.62"	0.437"	90 lbs.	2	7,400 lbs.	120 psi	TR-573
90275E	24.5" x 8.25"	6.62"	0.437"	89 lbs.	4	7,400 lbs.	120 psi	TR-573
90263E	24.5" x 8.25"	6.62"	0.437"	88 lbs.	5	7,400 lbs.	120 psi	TR-573
90261E	24.5" x 8.25"	6.62"	0.500"	97 lbs.	2	7,800 lbs.	120 psi	TR-573
** Inset value shown								
<b>Special Bus Mounting: 10 bolt hole, 11.25" bolt circle, 8.665" center hole</b>								
87934E	22.5" x 8.25"	6.62"	0.430"	79 lbs.	5	7,400 lbs.	120 psi	TR-573
91720E	24.5" x 8.25"	6.62"	0.437"	88 lbs.	5	7,400 lbs.	120 psi	TR-573
<b>10 bolt hole, 335mm (13.19") bolt circle, 281mm (11.063") center hole</b>								
2920086TW	22.5" x 7.50"	6.49"	0.463"	78 lbs.	10	6,930 lbs.	120 psi	V3-20-4
2920072TW	22.5" x 8.25"	6.69"	0.502"	84 lbs.	10	7,810 lbs.	120 psi	V3-20-4
10053TS	22.5" x 9.00"	6.88"	6.33"	94 lbs.	10	8,820 lbs.	130 psi	V3-20-6



# CentruSteel™ Stud Piloted Steel Disc Wheels



Stud piloted dual wheels use inner and outer cap nuts, so that each wheel is tightened individually. For a front or single wheel, a single cap nut is used. Right and left hand fasteners are required. Wheels of this type have spherical countersinks on each stud hole.

Part Number	Size	Wheel Offset	Disc Thickness	Approximate Weight	Hand Holes	Maximum Load Rating	Maximum Inflation	Recommended Valve
<b>10 bolt hole, 11.25" bolt circle, 8.725" center hole</b>								
87892E	22.5" x 7.50"	6.50"	0.430"	76 lbs.	5	7,100 lbs.	120 psi	TR-572
87893E	22.5" x 7.50"	6.50"	0.430"	78 lbs.	2	7,100 lbs.	120 psi	TR-572
87904E	22.5" x 8.25"	6.62"	0.430"	79 lbs.	5	7,400 lbs.	120 psi	TR-573
87905E	22.5" x 8.25"	6.62"	0.430"	81 lbs.	2	7,400 lbs.	120 psi	TR-573
89921E	22.5" x 8.25"	6.62"	0.500"	90 lbs.	2	7,800 lbs.	120 psi	TR-573
87896E	24.5" x 8.25"	6.62"	0.437"	88 lbs.	5	7,400 lbs.	120 psi	TR-573
87897E	24.5" x 8.25"	6.62"	0.437"	90 lbs.	2	7,400 lbs.	120 psi	TR-573
89922E	24.5" x 8.25"	6.62"	0.500"	97 lbs.	2	7,800 lbs.	120 psi	TR-573
<b>10 bolt hole, 11.25" bolt circle, 8.738" center hole</b>								
10048TW	22.5" x 9.00"	7.00"	0.581"	102 lbs.	2	10,000 lbs.	130 psi	TR-573-E17
<b>6 bolt hole, 8.75" bolt circle, 6.50" center hole</b>								
91836TW	17.5" x 6.75"	6.12"	0.417"	63 lbs.	2	5,070 lbs.	125 psi	TR-570-C14
<b>10 bolt hole, 8.75" bolt circle, 6.50" center hole</b>								
91834TW	17.5" x 6.75"	6.19"	0.417"	62 lbs.	2	6,500 lbs.	125 psi	TR570-C14



## Wide Base Hub & Stud Piloted Steel Wheels

These quality wheels offer weight savings resulting in better fuel economy or more payload. And with higher load ratings, you can be sure these wheels will carry the load! All wide base wheels are topcoated white. Custom colors are available upon request.

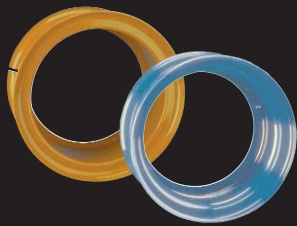


Part Number	Size	Outset (pos.)	Inset (neg.)	Approximate Weight	Hand Holes	Disc Position	Maximum Load Rating	Maximum Inflation	Recommended Valve <sup>(1)</sup>
<b>HUB PILOTED 10 bolt hole, 285.75mm (11.25") bolt circle, 220mm (8.661") center hole</b>									
10034TW	22.5" x 12.25"	4.54"	4.00"	111 lbs.	5	1	11,400 lbs.	125 psi	TR500
10035TW	22.5" x 12.25"	5.29"	4.75"	111 lbs.	5	1	11,400 lbs.	125 psi	TR574-E26
10039TW	22.5" x 13.00"	0.51"	0"	119 lbs.	5	2	11,000 lbs.	110 psi	TR574-E26
10043TW	22.5" x 13.00"	3.13"	2.62"	119 lbs.	5	2	11,000 lbs..	110 psi	TR500
10056TW	22.5" x 13.00"	5.78"	5.25"	117 lbs.	5	1	11,400 lbs.	125 psi	TR574-E26
10059TW	22.5" x 13.00"	4.83"	4.32"	121 lbs.	5	2	11,000 lbs.	130 psi	TR574-E26
10027TW <sup>(2)</sup>	22.5" x 14.00"	2.00"	1.49"	125 lbs.	0	2	11,000 lbs.	125 psi	TR575
10057TW	22.5" x 14.00"	2.00"	1.49"	125 lbs.	0	2	11,000 lbs.	125 psi	TR575
10031TW	22.5" x 14.00"	0.512"	0"	125 lbs.	0	2	12,300 lbs.	120 psi	TR575
<b>STUD PILOTED 10 bolt hole, 11.25" bolt circle, 8.725" center hole</b>									
10032TW	22.5" x 12.25"	4.54"	4.00"	112 lbs.	2	1	11,400 lbs.	125 psi	TR500
10033TW	22.5" x 12.25"	5.29"	4.75"	112 lbs.	2	1	11,400 lbs.	125 psi	TR574-E26
10042TW	22.5" x 13.00"	0.51"	0"	120 lbs.	2	2	11,000 lbs.	110 psi	TR574-E26
10036TW	22.5" x 13.00"	3.13"	2.62"	120 lbs.	2	2	11,000 lbs.	110 psi	TR500
10070TW	22.5" x 14.00"	2.00"	0"	125 lbs.	0	2	11,000 lbs.	125 psi	TR575 or TR570C
<b>HEAVY DUTY STUD PILOTED 10 bolt hole, 13.19" bolt circle, 10.669" center hole</b>									
10044TW	22.5" x 13.00"	<sup>(3)</sup> 6.67"	6.12"	122 lbs.	0	3	10,210 lbs.	110 psi	TR570
10045TW	22.5" x 13.00"	<sup>(3)</sup> 6.69"	6.12"	123 lbs.	0	3	12,500 lbs.	125 psi	TR570

<sup>(1)</sup>The valves listed for 12.25" and 13.00" rim sizes are for the inset position.

<sup>(2)</sup>Cautionary stamp provided for N spindle applications.

<sup>(3)</sup>Wheel is only to be installed in the inset position. Outset value shown is for reference only.



# Demountable Rims



Tubeless or tube-type demountable rims for Cast Spoke wheels. Available in our standard Electro-Deposition Primer or optional white, gray, black, or custom color premium electrostatic powder topcoat for superior corrosion protection.

## On-Highway Tubeless Rims

Part Number	Size		Offset	Approximate Weight	Maximum Load Rating	Maximum Inflation	Recommended Valve	
	(see chart at right)							
675175ERSE	17.5" x 6.75"	3.90"	47 lbs.	4,805 lbs.	120 psi	TR-573	17.5" diameter fits 15" cast spoke 22.5" diameter fits 20" cast spoke 24.5" diameter fits 22" cast spoke  "D" = demountable "V" = new rim "S" = short offset "L" = long offset  "E" = white primer See Paint Options page for other available finishes.	
750225DVSE	22.5" x 7.50"	4.24"	64 lbs.	7,030 lbs.	120 psi	TR-572		
825225DVSE	22.5" x 8.25"	4.40"	66 lbs.	7,300 lbs.	120 psi	TR-573		
825225DVLE	22.5" x 8.25"	4.75"	68 lbs.	7,300 lbs.	120 psi	TR-573		
825245DVSE	24.5" x 8.25"	4.40"	72 lbs.	7,300 lbs.	120 psi	TR-573		
825245DVLE	24.5" x 8.25"	4.75"	74 lbs.	7,300 lbs.	120 psi	TR-573		

## On-Highway Tube-Type Rims

Type	SIZE			ASSEMBLY		RIM BASE		SIDE RING		RATING	
	Width	Diameter	Offset	Part Number	Weight	Part Number	Weight	Part Number	Weight	Maximum Load Rating	Maximum Inflation
LW	6.50" T	15"	3.715"	6515LWDE	37 lbs.	B6515LWDE	27 lbs.	R6515LWE	10 lbs.	4,290 lbs.	105 psi
		20"	3.715"	6520LWDE	49 lbs.	B6520LWDE	36 lbs.	R6520LWE	13 lbs.	4,610 lbs.	105 psi
LW	7.50" V	15"	4.258"	7515LWDE	52 lbs.	B7515LWDE	40 lbs.	R8015LWE	12 lbs.	5,520 lbs.	105 psi
		20"	4.258"	7520LWDE	70 lbs.	B7520LWDE	54 lbs.	R8020LWE	16 lbs.	6,400 lbs.	105 psi
LW	8.00" V	20"	4.496"	8020LWDE	73 lbs.	B8020LWDE	57 lbs.	R8020LWE	16 lbs.	7,600 lbs.	105 psi
		24"	4.496"	8024LWDE	87 lbs.	B8024LWDE	68 lbs.	R8024LWE	19 lbs.	7,600 lbs.	105 psi
LW	9.00" V	20"	5.123"	9020LWDE	92 lbs.	B9020LWDE	76 lbs.	R8020LWE	16 lbs.	9,230 lbs.	120 psi
		24"	5.123"	9024LWDE	110 lbs.	B9024LWDE	91 lbs.	R8024LWE	19 lbs.	9,230 lbs.	120 psi

## Heavy Duty On/Off Highway Type M Rims

Width	SIZE		ASSEMBLY		RIM BASE		FLANGE		LOCK RING		RATING	
	Dia.	Offset	Part No.	Weight	Part No.	Weight	Part No.	Weight	Part No.	Weight	Max. Load Rating	Max. Inflation
7.50" VM	20"	4.750"	7520MDE	80 lbs.	B8020LWDE	57 lbs.	F7520ME	16 lbs.	LR20ME	7 lbs.	7,600 lbs.	120 psi
7.50" VM	24"	4.750"	7524MDE	97 lbs.	B8024LWDE	68 lbs.	F7524ME	19 lbs.	LR24ME	9 lbs.	7,600 lbs.	120 psi
8.50" VM	20"	5.375"	8520MDE	99 lbs.	B9020LWDE	76 lbs.	F7520ME	16 lbs.	LR20ME	7 lbs.	9,230 lbs.	120 psi
8.50" VM	24"	5.375"	8524MDE	119 lbs.	B9024LWDE	91 lbs.	F7524ME	19 lbs.	LR24ME	9 lbs.	9,230 lbs.	120 psi
10.00" W	20"	6.312"	1020MDE	116 lbs.	B1020MDE	87 lbs.	F1020ME	22 lbs.	LR20ME	7 lbs.	9,610 lbs.	120 psi
10.00" W	24"	6.312"	1024MDE	141 lbs.	B1024MDE	105 lbs.	F1024ME	27 lbs.	LR24ME	9 lbs.	11,250 lbs.*	120 psi
											9,740 lbs.	120 psi
											11,500 lbs.*	120 psi

\* For restricted highway speeds 50 MPH maximum.